

AXOR

EVERY DESIGN
STARTS WITH A
SPECIAL STORY.

AXOR ESSENTIALS
FORM FOLLOWS PERFECTION

AXOR stands for self-expression. This can be seen in an impressive array of products created over the last 25 years. Around 2,000 products across more than a dozen collections and categories. Products utterly unique in their philosophy, conception and style, from the timeless to the avant-garde. Honored with various international design awards. Offering unique opportunities for customization. Personalization. Self-realization.

Driving it all is the pursuit of perfection. A process that continues until there is nothing left to add or remove. Until the product has become something more than sum of its form and function. This is the perfection AXOR aspires to in the development, design and production of every single one of its faucets, showers and accessories. It is a philosophy shared by the best designers in the world. For pioneering innovations. Without compromise. Form follows perfection.

CONTENTS

06

AXOR brand

FORM
FOLLOWS
PERFECTION



12

AXOR collections

62

AXOR programs



70

AXOR individualization

74

AXOR inspiration



84

AXOR design partners





AVANT-GARDE

FORGE AHEAD,
SETTING TRENDS
INSTEAD OF
FOLLOWING THEM.



INDIVIDUALIZATION

EXPRESS YOUR
PERSONALITY.







PERFECTION

THE PURSUIT OF
UNIQUENESS IN
EVERY DIMENSION.



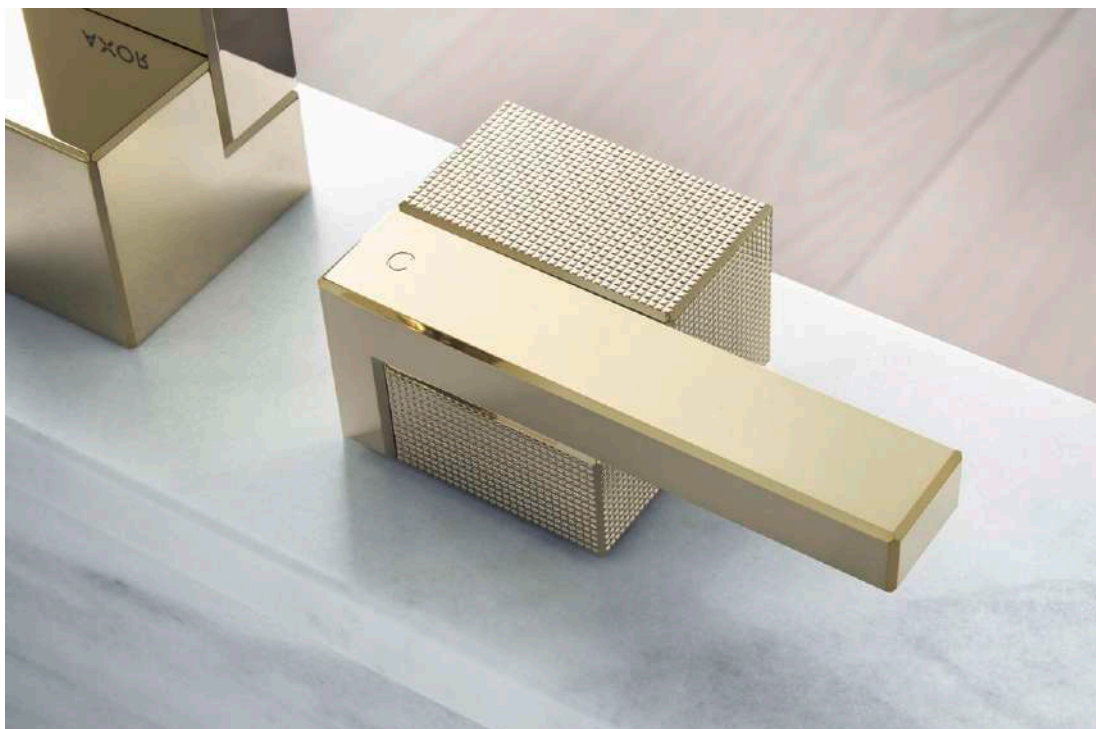
AXOR EDGE

THE POWER OF
ARCHITECTONICS.

13

The cube. Ushered into art by the avant-garde of the early 20th Century. Taken to a new level by AXOR Edge. A symmetrical arrangement of rectangular prisms, crafted with ultra-precision. A masterpiece through and through. Cube by cube. Transcending aesthetic and technical boundaries. Cut with diamond, for edges and surfaces that verge on perfection. Enhanced with surface structures that create fascinating contrasts. A testimony to the discerning taste of its owner.

Design: Jean-Marie Massaud



AXOR EDGE IS A PRECIOUS GEM IN THE BATHROOM.

AXOR Edge takes exclusivity to a new level. With mirror-like surfaces that reflect light evenly. Their characteristic brilliance is due to the immaculate surfaces and edges – finished with diamonds for the highest precision. Upon request, diamond polishing creates contrast. It is the ultimate luxurious detail, whether on the body or on a detail of the faucet. Its three-dimensional character produces a new tactile experience – and expresses an individual personality.

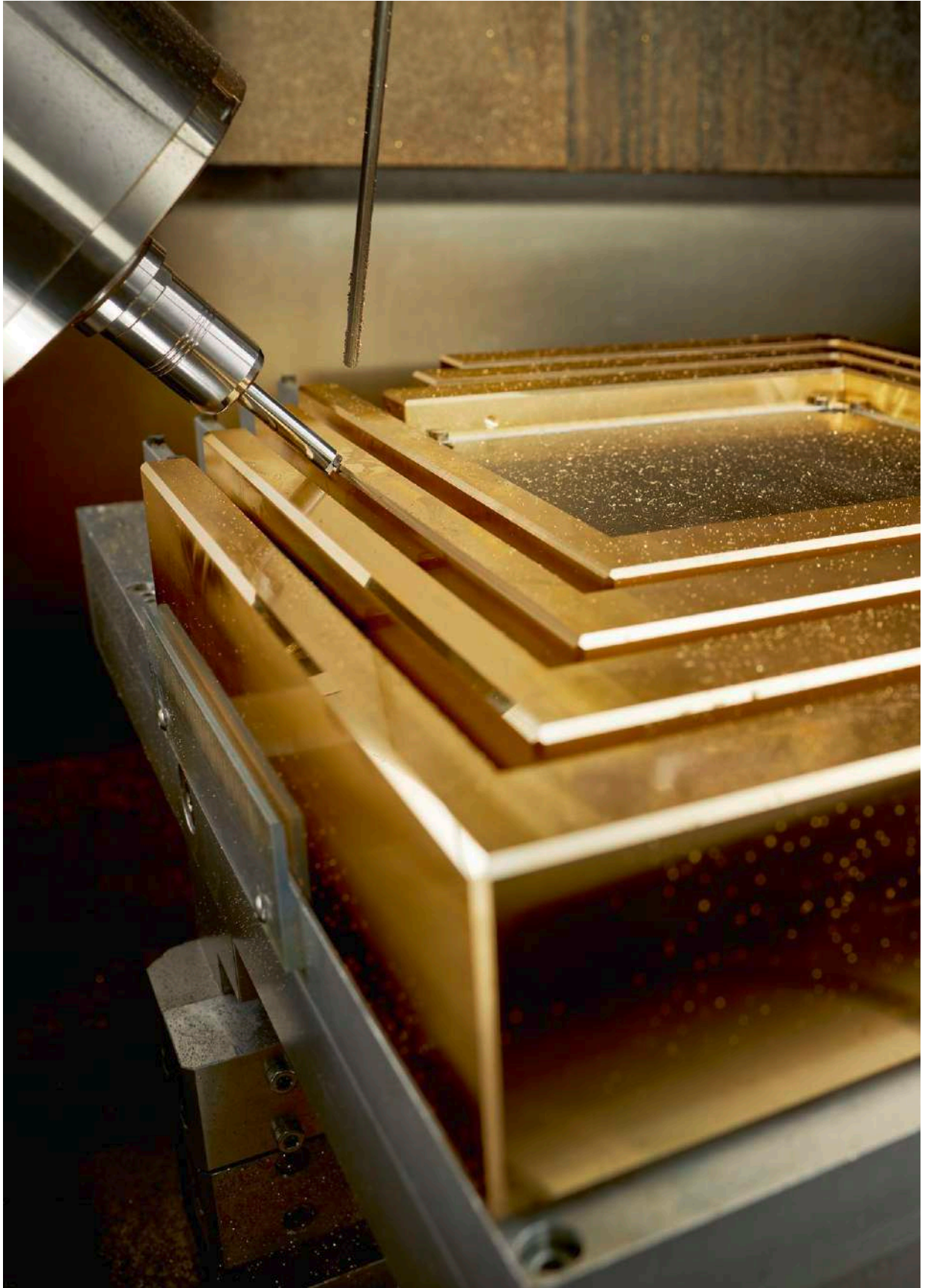
Architectonics, even in shower design: The AXOR Edge thermostat Select module. And the AXOR Edge exposed thermostat, with its generously proportioned shelf. Use the surface as a luxurious design element. A statement in shower design. Unsurpassed in operation.

Learn more about AXOR Edge: axor-design.com/axor-edge



15







Precision is the foundation of brilliance. That's why AXOR Edge harnesses the power of the latest diamond-cutting technology. Taken from the aerospace industry and specially adapted for AXOR, this exclusive technology offers precision down to a thousandth of a millimeter. For perfect surfaces and edges, and precise 45° chamfers.

The fine pattern structures are created with the same high precision: Diamonds finish the surface of massive blocks of brass. Line by line, over and over again, until pyramids are formed with precision down to the micrometer. The result is a fascinating interplay of light and shadows. An achievement made possible by the strength of that most precious of gems, the diamond.



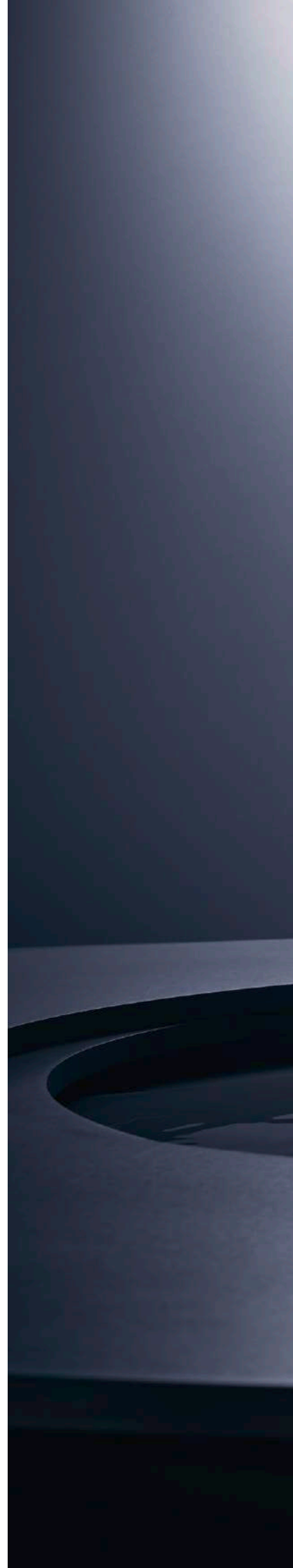
AXOR STARCK V

18

THE VITALITY OF WATER.

Water releases energy. Boldness channels it into a spectacular form. AXOR Starck V sets the water free, revealing an extraordinary natural spectacle: a vortex. In all its strength and glory. Vital and elemental. A daring idea.

Design: Philippe Starck







Extravagance has many facets. Both in design and in materiality. AXOR Starck V has a classically elegant appearance in crystal glass. As an option, available with diamond or bevel cut. For easy cleaning, the faucet spout can be separated from the base with just a click. For the maximum in customization, choose one of the exclusive AXOR FinishPlus surface finishes for the base.

20 Learn more about AXOR Starck V: axor-design.com/axor-starck-v





WITH AXOR STARCK V, THE BEAUTY OF
WATER IS VISIBLE IN THE FAUCET.



AXOR MASSAUD

THE PEACE OF NATURE.

23

Water. A source of well-being, composure, life. AXOR Massaud enhances the connection between people and this ever-flowing source. A collection created without compromise, AXOR Massaud is characterized by an avant-garde organic design that invites the user to celebrate each moment spent in communion with the vital resource that is water.

Design: Jean-Marie Massaud



AXOR MASSAUD IS AN AVANT-GARDE
EXPRESSION OF ORGANIC DESIGN.





25

"We need water, not faucets; light, not lighting; heat, not heaters." In this spirit, designer Jean-Marie Massaud developed a design language for AXOR Massaud derived from organic elements: The body suggests a blade of grass; the flood jet, a natural waterfall; the bathtub, a lake. The accessories, too, reflect the influence of nature. The bathroom becomes a place of peace and contemplation.

The large shelf of the AXOR Massaud faucet offers a place on which to set accessories, a small vase, even a glass of champagne. Beyond the obvious practicality of the shelf is the magical moment when a perfect waterfall comes pouring out from its edge.

Learn more about AXOR Massaud: axor-design.com/axor-massaud

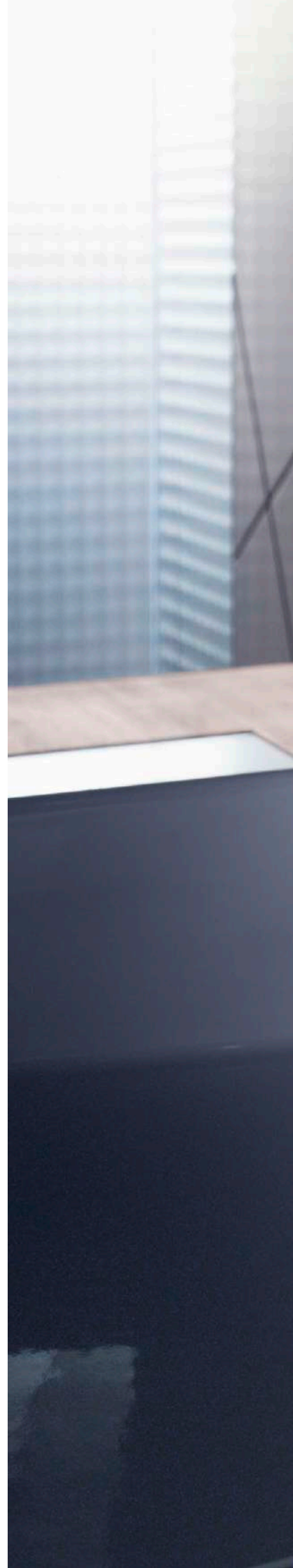
AXOR URQUIOLA

POETRY FOR THE SENSES.

26

Free. Impulsive. Unique in character. AXOR Urquiola is a multi-faceted collection, surprising and idiosyncratic. Stylistic flourishes and thoughtful details come together in a sensual design of impressive functionality. The result is of one-of-kind collection, as poetic as it is practical.

Design: Patricia Urquiola





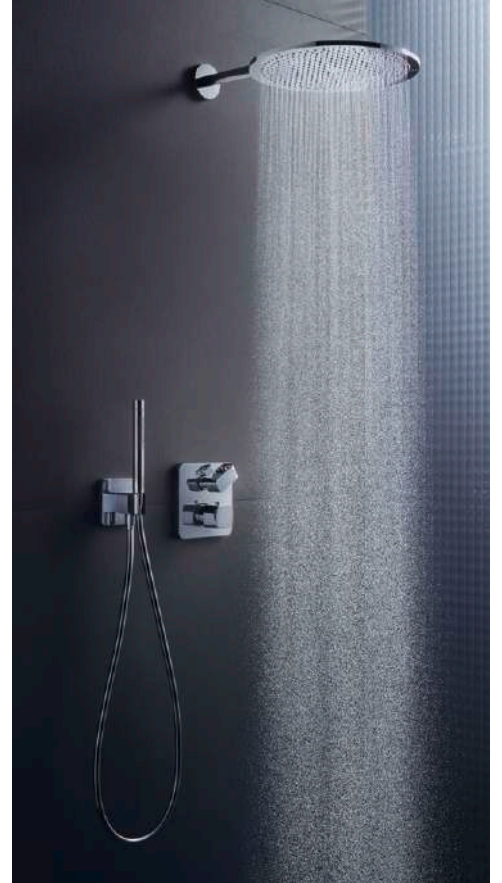
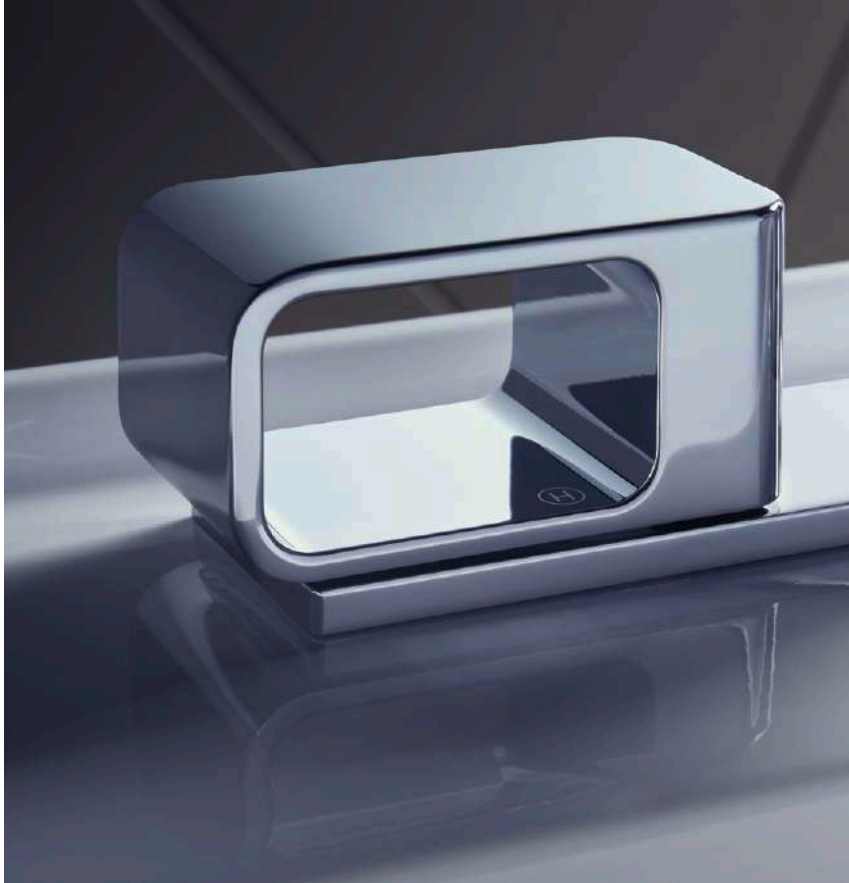
An artistic fusion of styles is evident in every surface and curve. Asymmetries appear to emerge organically. Extravagant shapes, reminiscent of antique washbasins and tubs, conjure bygone eras. Delightful contrasts are synthesized in a style that is unique.

Learn more about AXOR Urquiola: axor-design.com/axor-urquiola

28



AXOR URQUIOLA IS A COLLECTION EQUALLY AT HOME IN THE MOST ECLECTIC OF INTERIORS AND THE MOST REDUCED.





AXOR STARCK ORGANIC
SENSE AND SENSIBILITY.

31

Inspired by nature, AXOR Starck Organic combines sheer beauty with remarkable efficiency. Sculptural and sensuous, its avant-garde design is as organic in shape as it is minimal in its use of resources. Just as nature would have wanted it.

Design: Philippe Starck



The design of AXOR Starck Organic references the beauty found in nature: a branch, for example, or a drop of water. Handles merge with the body to form a single unit. Water pressure and temperature are controlled separately, an efficient operating concept. The innovative shower spray function significantly reduces water use. At just 3.5 liters per minute, it sets a new benchmark at the washbasin. The AXOR Starck Organic collection is the recipient of a prestigious Green Product Design Award.

Learn more about AXOR Starck Organic: axor-design.com/axor-starck-organic





AXOR STARCK ORGANIC CELEBRATES BOTH THE
BEAUTY AND THE EFFICIENCY OF NATURE.

AXOR MYEDITION

A PERSONAL STATEMENT.

34

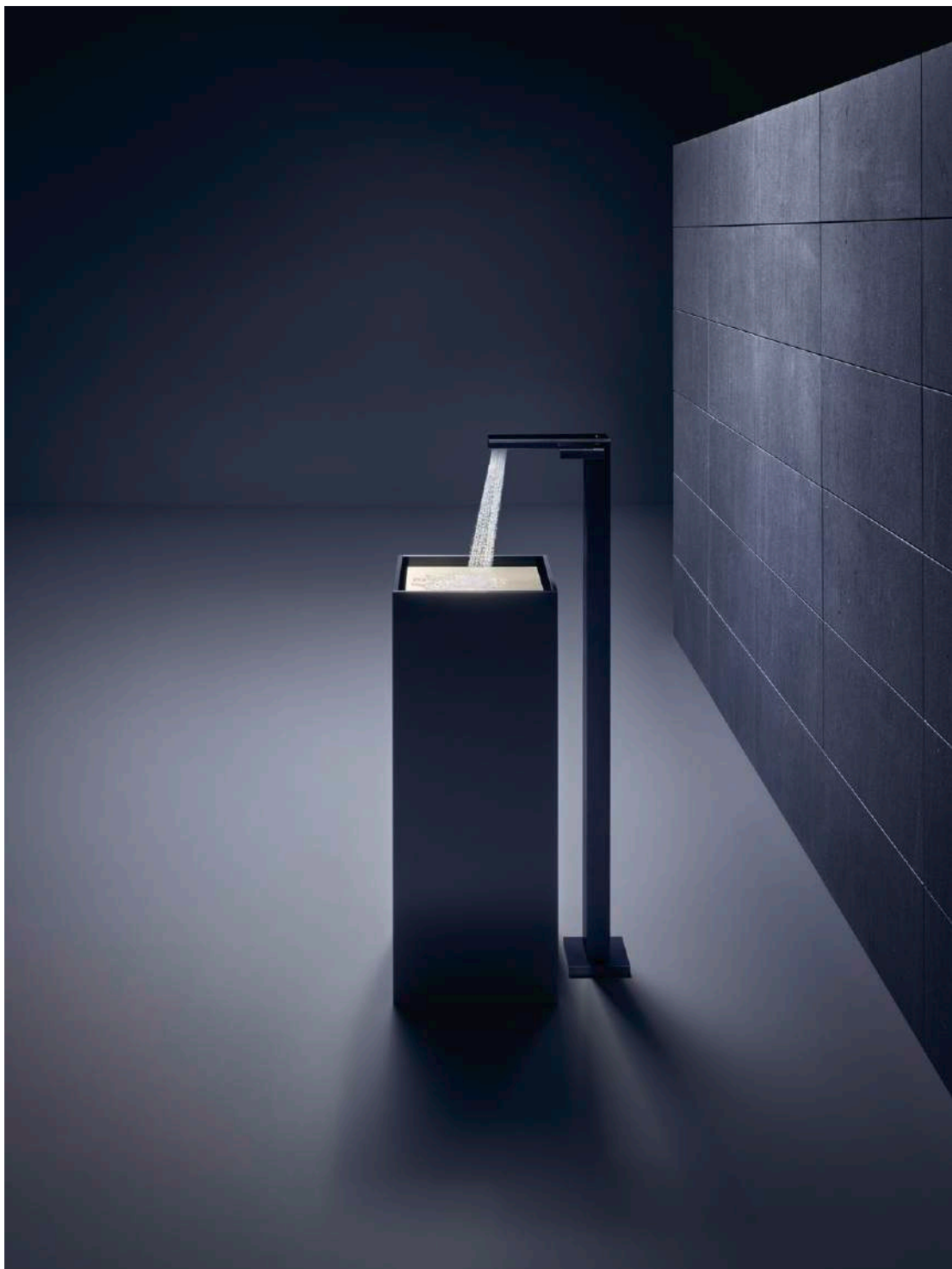
Setting oneself apart. Gratifying the need for uniqueness.
Striking out in a new direction. This is what AXOR MyEdition stands for. Clear, linear designs set the stage for self-realization. For one's own creativity. With a wide range of cover plates, customizable upon request. Avant-garde for the age of personalization.

Design: PHOENIX



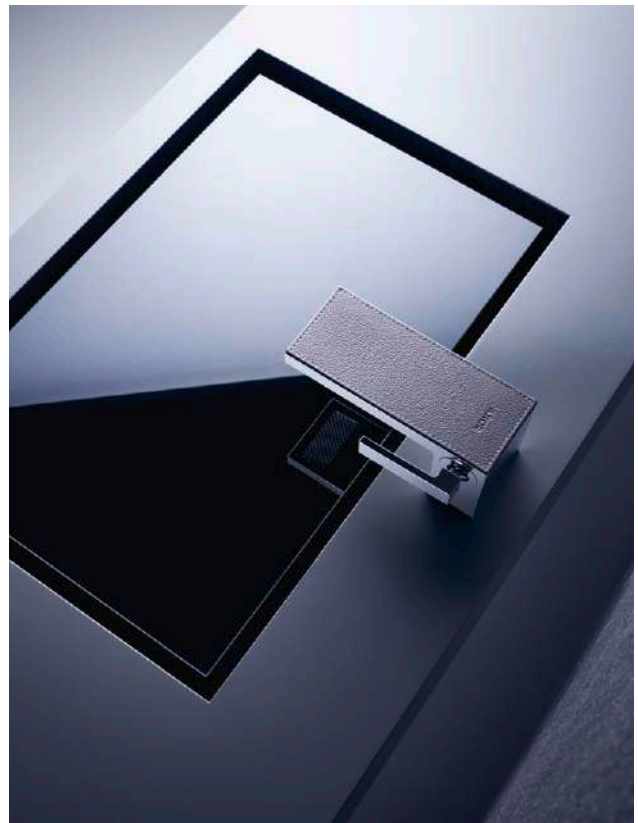


WITH ITS USE OF NATURAL MATERIALS AND SPECIAL
SURFACE FINISHES, AXOR MYEDITION OPENS
A NEW DIMENSION IN CUSTOMIZATION.



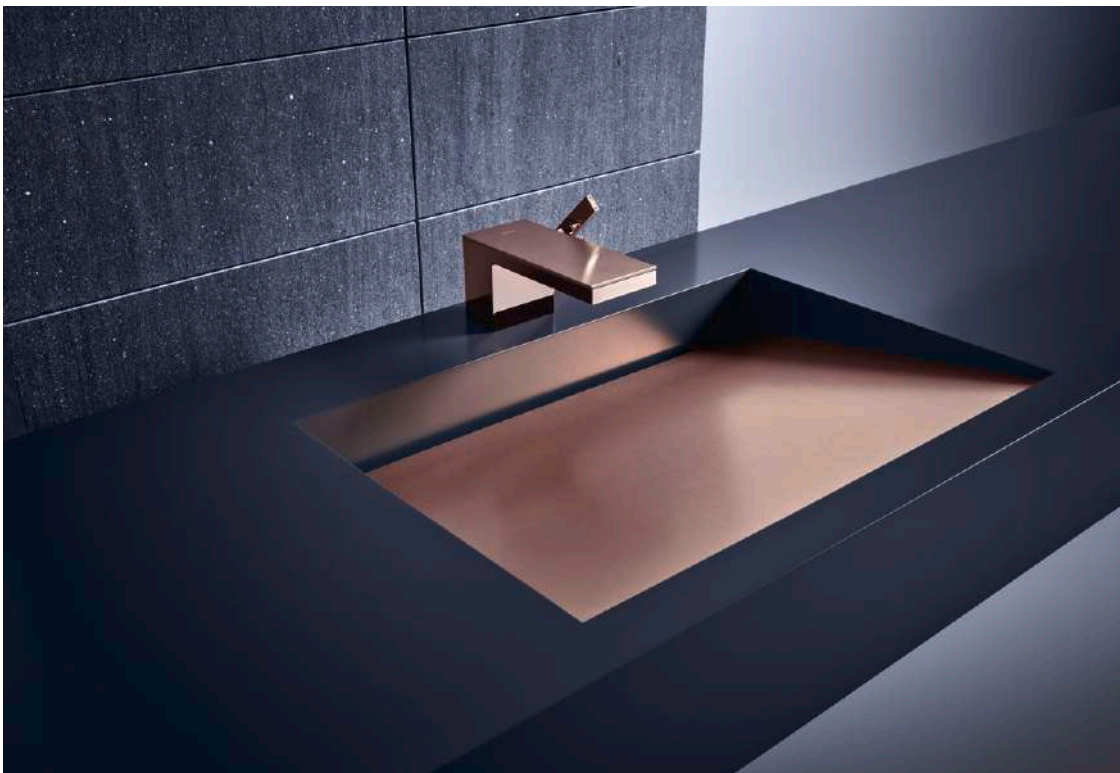


Luxury is all about fulfilling personal dreams: A fascinating cover plate in glass, metal, wood, marble or leather crowns the body of each faucet. Every plate is one-of-a-kind. And the use of natural materials offers new tactile experiences. As does the exclusive Satin Black surface finish, brand new for a faucet and distinguished by its originality. AXOR MyEdition. The ultimate personalized choice for the bathroom, whether integrated into the overall interior design or as a statement on its own.



Learn more about AXOR MyEdition:
axor-design.com/axor-myedition

37





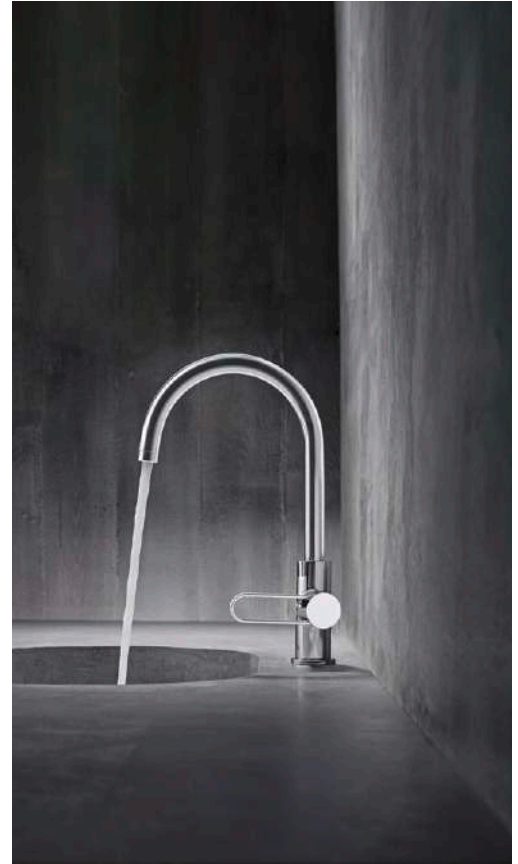
AXOR UNO

THE POWER OF SIMPLICITY.

39

Irreducibly simple shapes. Design made visible. AXOR Uno has perfected purism. The faucet consists of pipes that seem simply to have been fused together, creating the most elemental form of water transportation. Inspired by the Golden Mean, the shape exudes a subtle but unmistakeable power. The power of simplicity.

Design: PHOENIX



AXOR UNO BRINGS RADICAL PURISM TO BATHROOM DESIGN.

All AXOR Uno product variations are characterized by their radically reduced form, from the minimalist bow-shaped handle to the 'zero' handle to the purist handle with innovative Select technology. Radically simple in operation, Select Technology turns the water on or off at the touch of a button.

Rigorously purist in design, AXOR Showerpipe 800 is the perfect addition to AXOR Uno in the shower.

Learn more about AXOR Uno: axor-design.com/axor-uno



41



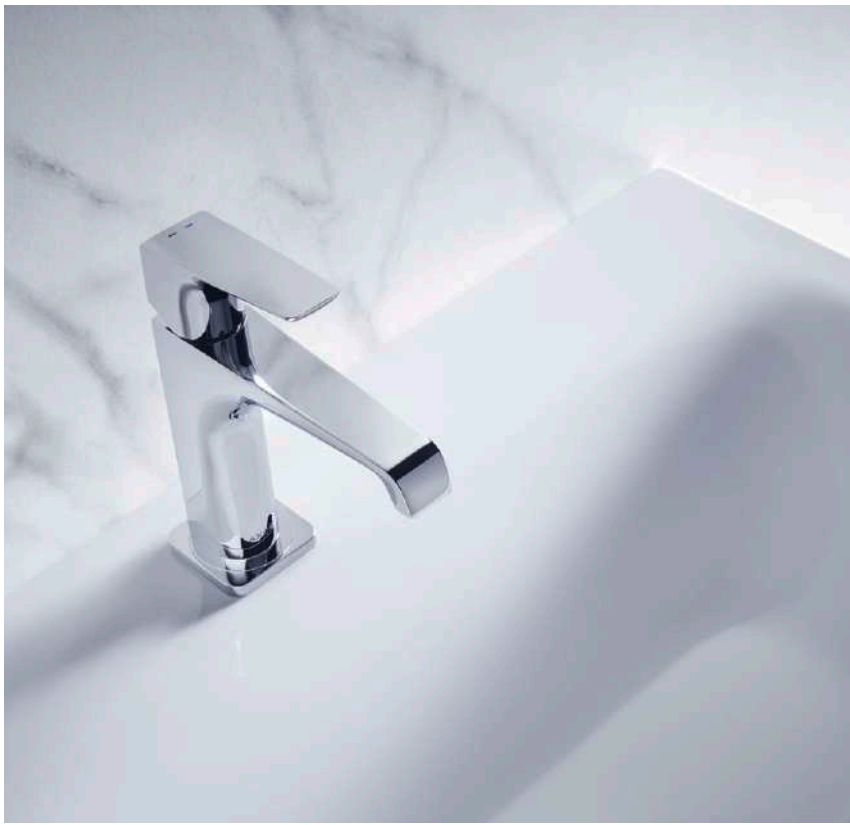


AXOR CITTERIO E
THE ESSENCE OF ELEGANCE.

43

Harmony arises from the calm balance of opposites. AXOR Citterio E achieves this harmony through a unique blend of the curved with the angular, the familiar with the new, the classic with the modern. Special attention has been given to proportions, as reflected in the gentle taper of the spout and the fine ergonomic design of the handle. The result is timeless elegance. Elegance that puts the E in AXOR Citterio E.

Design: Antonio Citterio



Beauty is formed of opposites, balanced right down to the last detail. AXOR Citterio E exemplifies this principle. The tapered spout and classic cross handles convey heritage and offer a familiar presence. The modern pin handle and the ergonomic lever handle equate to modern comfort.

Learn more about AXOR Citterio E: axor-design.com/axor-citterio-e

AXOR CITTERIO E IS A PERFECT FUSION
OF THE CLASSIC AND THE MODERN.



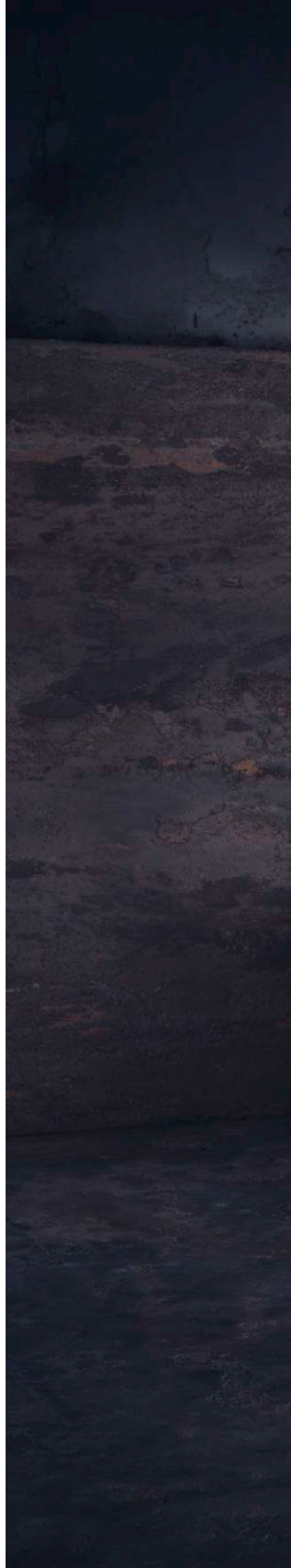
AXOR STARCK

46

THE ARCHETYPE.

AXOR Starck. A visionary idea brought to fruition.
A reinterpretation of the archetypal well pump: familiar in shape,
uncompromising in function, and with an elemental connection
to water. A milestone in faucet design, AXOR Starck has been
taking bathrooms by storm for 25 years. A classic today,
it remains as avant-garde as it was on the day it launched.

Design: Philippe Starck



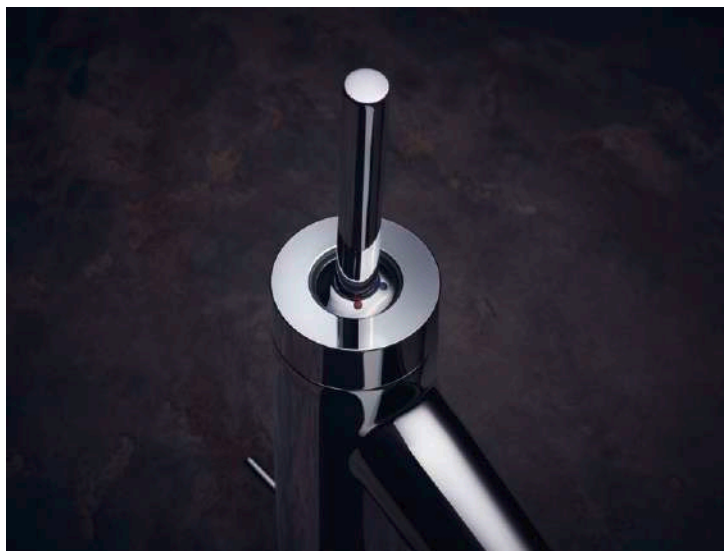




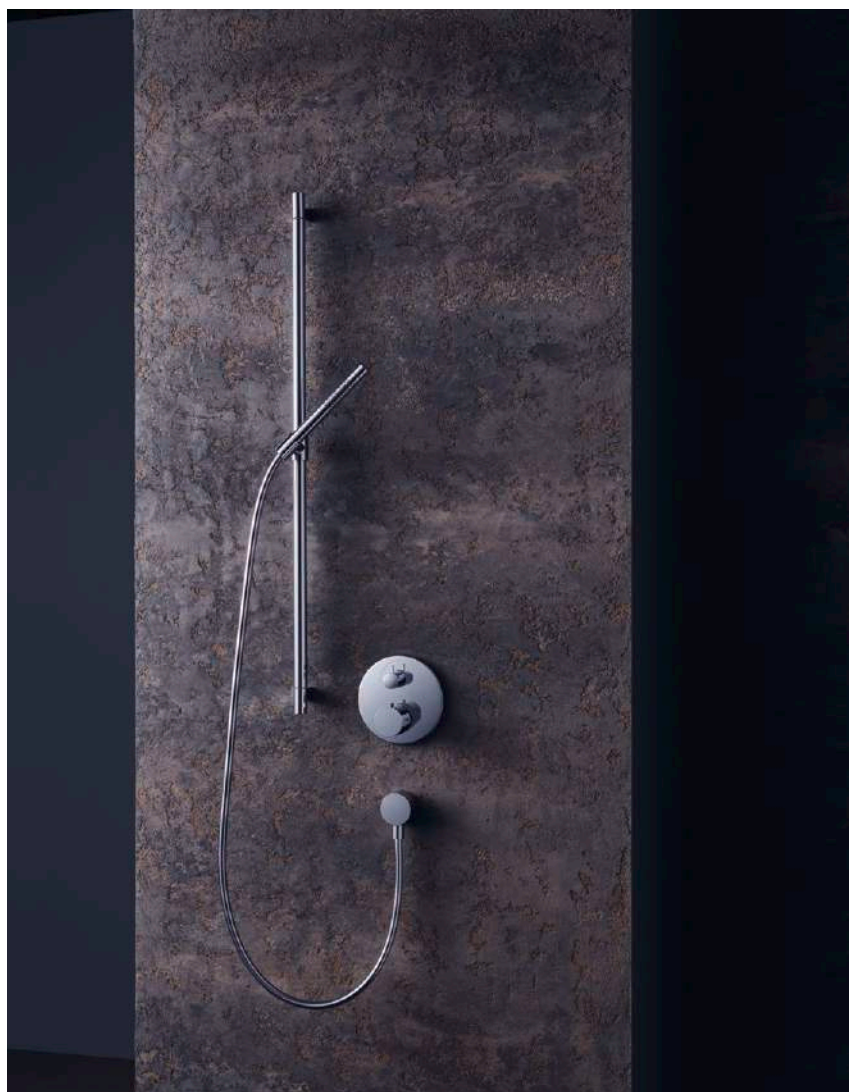
With AXOR Starck, it's all about reduction. From the archetypal form with diagonal spout to the various handle options. The same is true for the hand shower, a design milestone.

Learn more about AXOR Starck:
axor-design.com/axor-starck





AXOR STARCK EMBODIES THE
AESTHETIC OF MINIMALISM.





AXOR CITTERIO M
URBAN LIVING.

51

M as in metropolis. AXOR Citterio M stands for cultivated, urban living. Simple, slim and monumental, with clearly defined lines, the collection is an expression of modern, urban elegance. With a quiet and understated presence in the bathroom. A masterpiece, offering an everyday retreat from the frenetic pace of the city.

Design: Antonio Citterio and Toan Nguyen



AXOR CITTERIO M REPRESENTS MODERN
BATHROOM DESIGN FOR THE METROPOLIS.





Particularly characteristic of AXOR Citterio M: the tapered faucet spout. With ergonomic lever handles. Easy to operate, the handles are shaped like half of a river pebble – flat on top, round on the bottom. AXOR Citterio M meets all of the requirements for elegant urban living. At the highest level.

Learn more about AXOR Citterio M: axor-design.com/axor-citterio-m

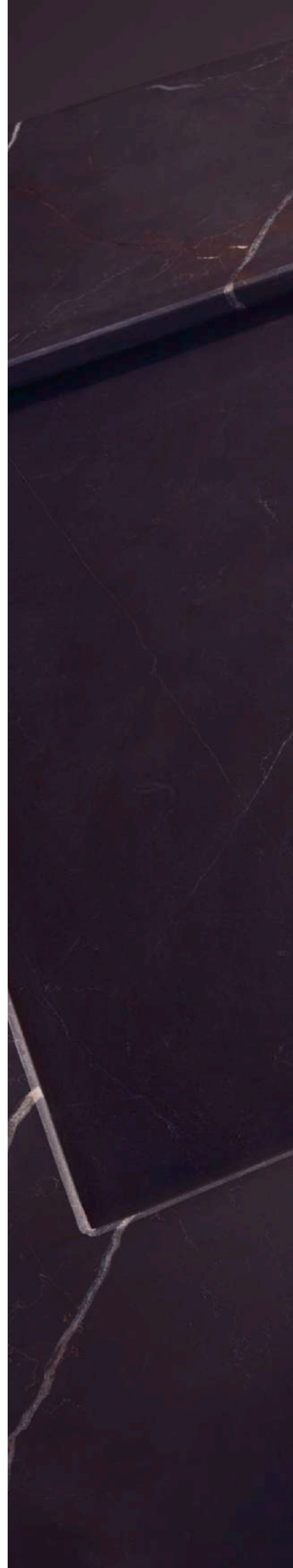
AXOR CITTERIO

A CELEBRATION OF WATER.

54

Water is precious. What better way to honor it than with AXOR Citterio, a striking collection of uncompromisingly high quality? Inspired by 1930s neo-classicism, this monument for the washbasin is characterized by rational curves and smooth flat surfaces. Its formal restraint creates the perfect backdrop for water's dynamic rush, enabling us to experience the moment with heightened consciousness.

Design: Antonio Citterio







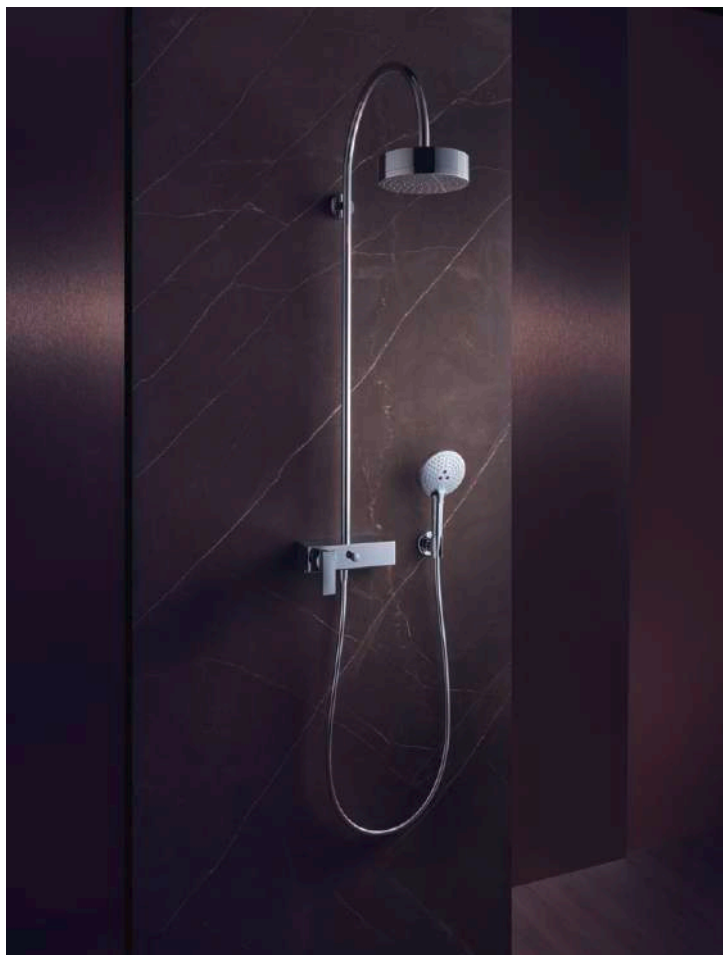
56

Characteristics of this monumental collection: The angular, precisely manufactured handles are particularly striking. Both the cross-handle version and the single-lever version with joystick handle allow for a conscious experience of water. The spout, with its flat, faceted surfaces, brilliantly reflects the light.

Learn more about AXOR Citterio: axor-design.com/axor-citterio



AXOR CITTERIO IS
A MASTERPIECE OF
ITALIAN NEO-CLASSICISM.





AXOR MONTREUX

THE TRADITION OF INDUSTRIAL DESIGN.

59

The Belle Époque. An era of fundamental change and technical progress, immortalized in the grand hotels of Europe. And in Montreux, the legendary spa resort on the shores of Lake Geneva. Steeped in this tradition, the AXOR Montreux collection reflects the authentic design of the very first industrially produced faucets.

Design: PHOENIX



60

The aesthetic of early industrial design is revealed in pipes that are slip-fit and connected with nuts. Unmistakably classic details include the bridge faucet and the cross handles. The high spouts and lever handles, meanwhile, are modern interpretations. The authentic design of AXOR Montreux is combined with outstanding technology and functionality. Particular attention is given to detail: upon request, the porcelain inlays can be personalized with labeling from AXOR Signature.

Learn more about AXOR Montreux: axor-design.com/axor-montreux



AXOR MONTREUX COMBINES
CLASSIC DESIGN WITH
MODERN FUNCTIONALITY.

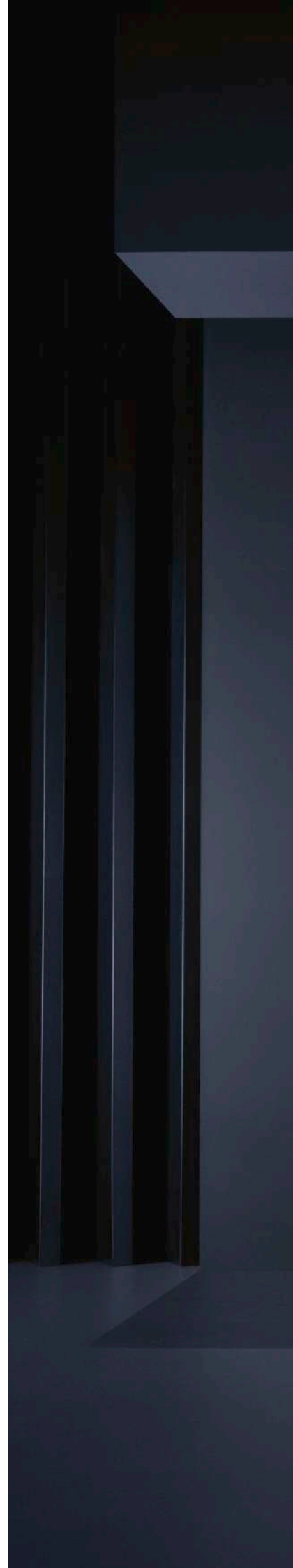


AXOR SHOWERS

62 EXCELLENCE IN THE SHOWER.

Unsurpassed in design. Striking in appearance. Creating a captivating water experience. Shower products by AXOR are an homage to the precious element that is water. Perfect design objects for the body, the spirit and the bathroom space. Turning the shower into a luxurious retreat.

Design: Philippe Starck, PHOENIX, Nendo, Front, Barber & Osgerby



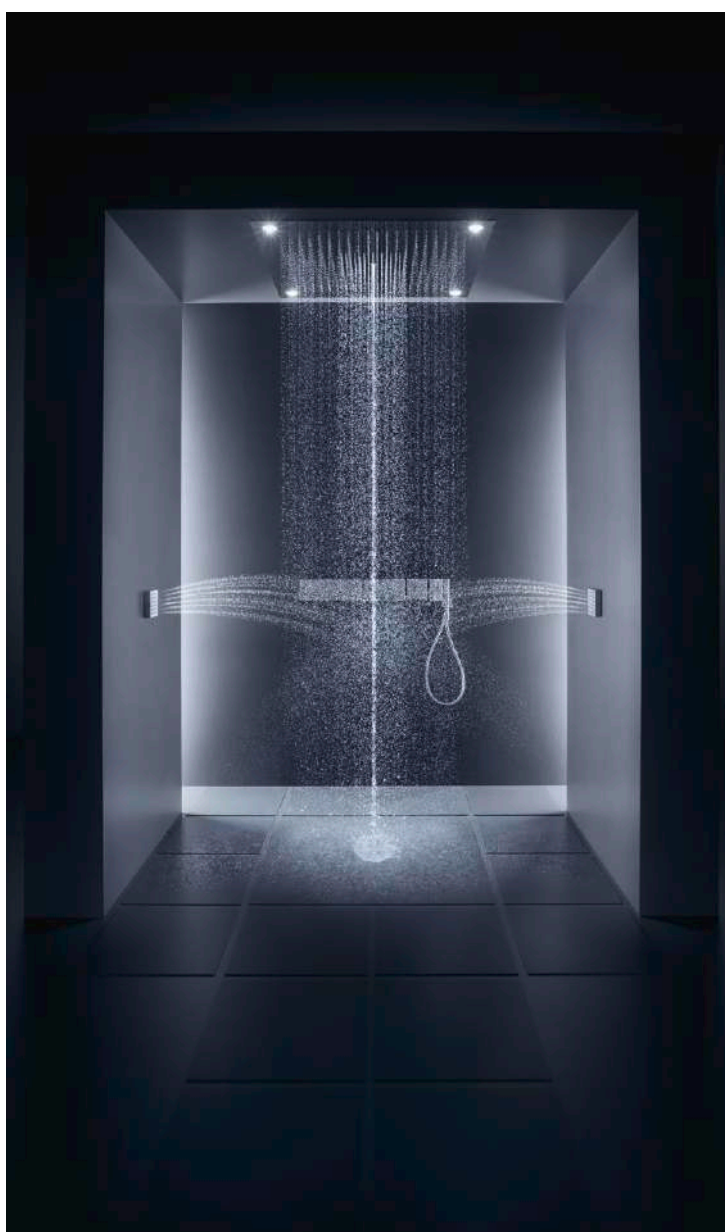
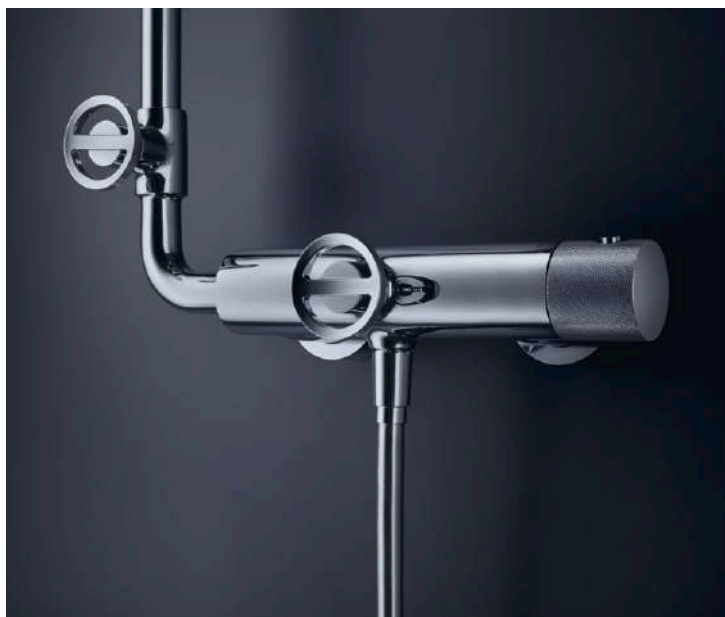




AXOR SHOWER PRODUCTS REPRESENT DESIGN, INNOVATION
AND WATER EXPERIENCE AT THE HIGHEST LEVEL.

Perfectly designed showers and thermostats give form to the most innovative technologies. AXOR ShowerHeaven and the AXOR ShowerCollection provide a shower experience with a complete spa feeling. The innovative strength of AXOR is reflected in the AXOR LampShower by Nendo, a magnificent source of both light and water. The AXOR ShowerPipe by Front features an authentic industrial design. The AXOR One control element offers mechanical precision with intuitive control, thanks to Select technology. And the innovative PowderRain spray mode creates a fine shower rain that envelops the entire body like a watery cocoon.

Learn more about AXOR showers: axor-design.com/axor-showers



AXOR ACCESSORIES

AVANT-GARDE IN DETAIL.

Bathroom accessories by AXOR. In the designs of the individual AXOR collections or as a universal product range. From minimalistic to sculptural, organic to classic, these accessories supplement the AXOR collections and complete the bathroom design.

Design: Antonio Citterio, Philippe Starck, Patricia Urquiola, Jean-Marie Massaud, PHOENIX

Learn more about AXOR accessories: axor-design.com/axor-accessories



AXOR BATHROOM ACCESSORIES, EACH A UNIQUE DESIGN OBJECT,
ARE THE PERFECT COMPLEMENT TO THE AXOR COLLECTIONS.



AXOR KITCHEN

AVANT-GARDE
IN THE KITCHEN.

68

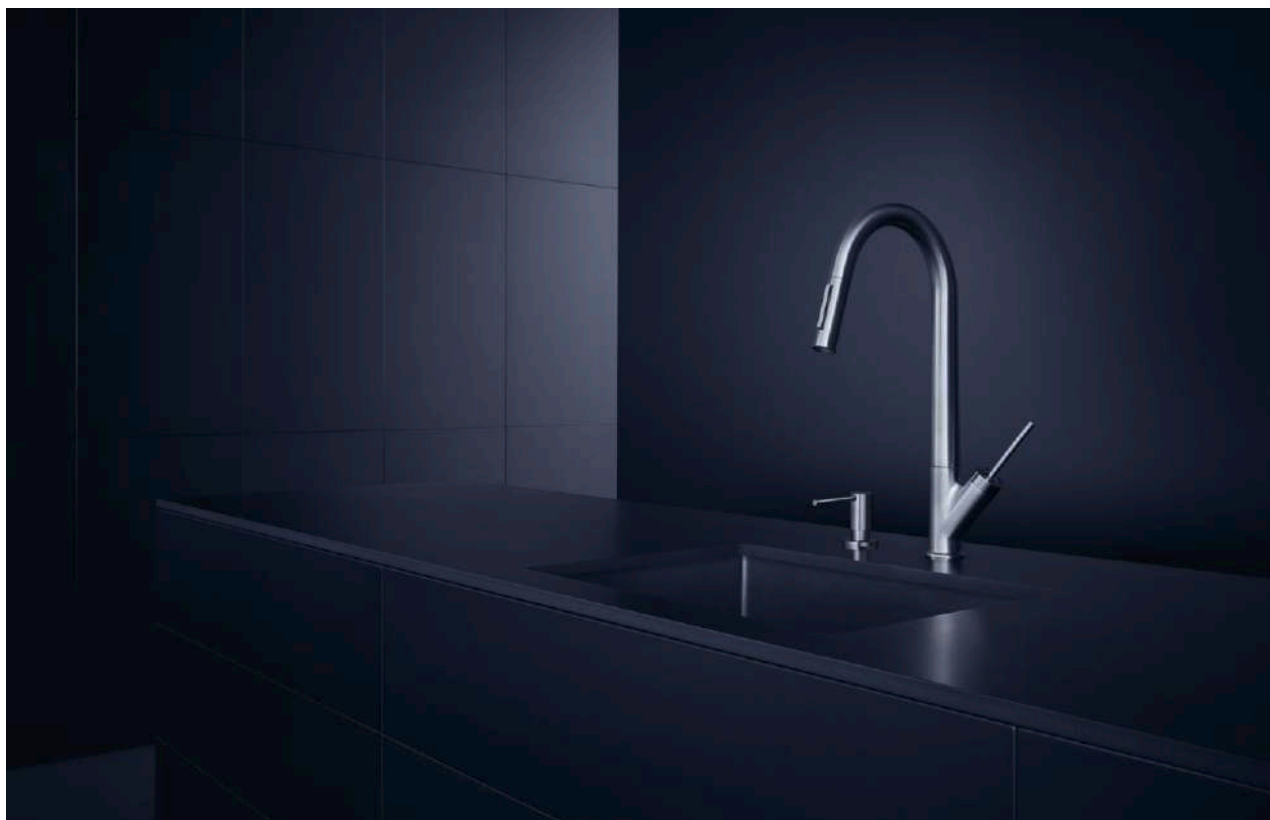
The innovation power of AXOR meets the creative talent of world-renowned designers. Integrating astonishing beauty with intuitive technology. Opening new sensual and aesthetic dimensions. Inspiring culinary evolution. Ensuring effortless convenience and ease of operation. Turn water on and off at the touch of a button with Select control technology. Enjoy a wide range of action, with or without pull-out spray. Choose from various spray modes. Opt for SemiPro and 360° swivel spout versions. Experience avant-garde in the kitchen.

Design: Philippe Starck, Antonio Citterio, PHOENIX

Learn more about AXOR kitchen products: axor-design.com/axor-kitchen



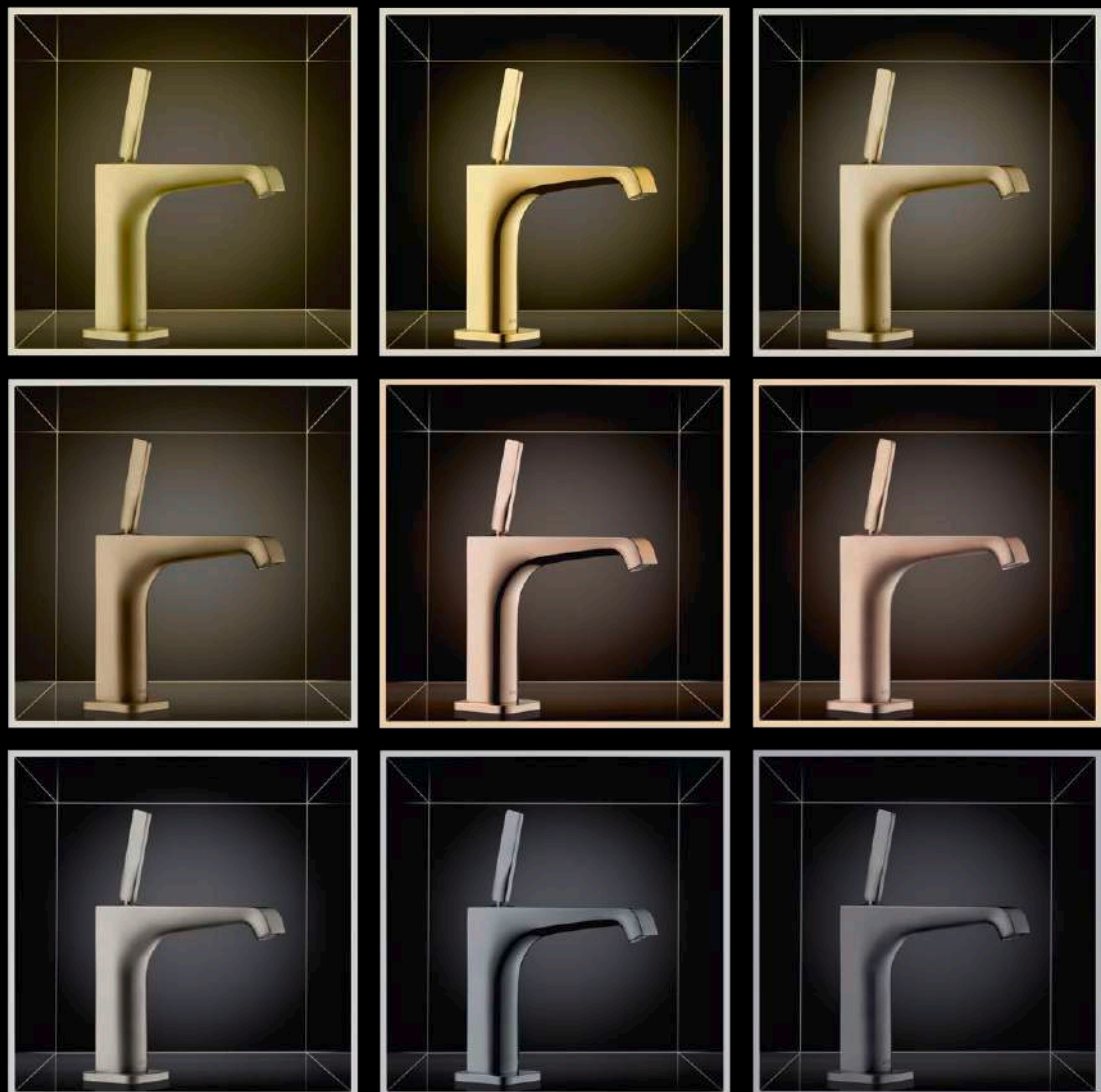
UNIQUE KITCHEN FAUCETS. FROM MINIMALIST TO TRADITIONAL.
FROM HIGHLY FUNCTIONAL TO SEMI-PROFESSIONAL.

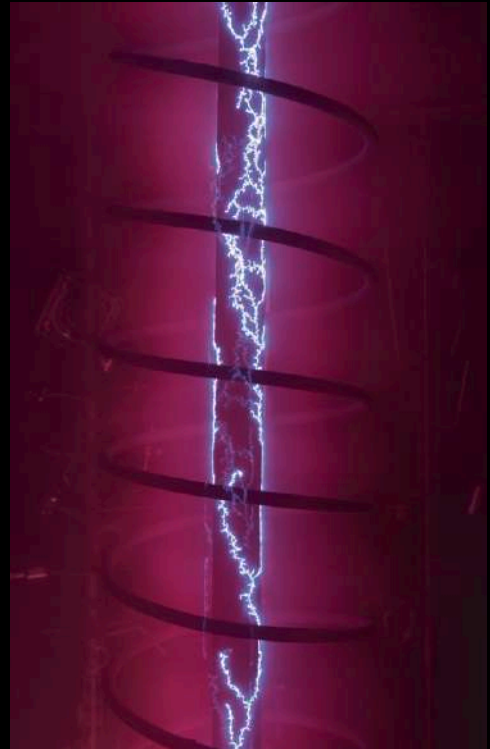


AXOR FINISHPLUS

CUSTOMIZATION OF
A SPECIAL KIND.

Luxury is all about the fulfillment of personal dreams. That is why AXOR offers customization par excellence. The exclusive surface finishes of AXOR FinishPlus set new standards for luster, robustness and durability. From Polished Gold Optic to Brushed Black Chrome. Manufactured with state-of-the-art engineering. From unique specimens to large-scale productions. Made in Germany.





THE MASTERLY COMBINATION
OF HIGH TECHNOLOGY AND
TIMELESS CRAFTSMANSHIP.

AXOR FinishPlus surface finishes have unmistakable character. Each color is the result of intensive development. Each surface is custom-finished in AXOR's vacuum chambers using an advanced PVD (physical vapor deposition) process. An arc of light erupts in the high vacuum. Gases bond with zirconium. The mixture is applied to the chrome surface of the faucet. This high-tech procedure gives each surface remarkable brilliance and exceptional resilience against scratching, cleaning agents and the salt in sea air.

Learn more about AXOR FinishPlus: axor-design.com/axor-finishplus

AXOR SIGNATURE

FROM UNIQUE TO ONE-OF-A-KIND.

AXOR turns bathroom faucets into something truly unique. A design object becomes an entirely personalized shower, tailored to the needs and tastes of its owner. Lengthening, shortening, labeling – these are the exclusive services that AXOR Signature provides.



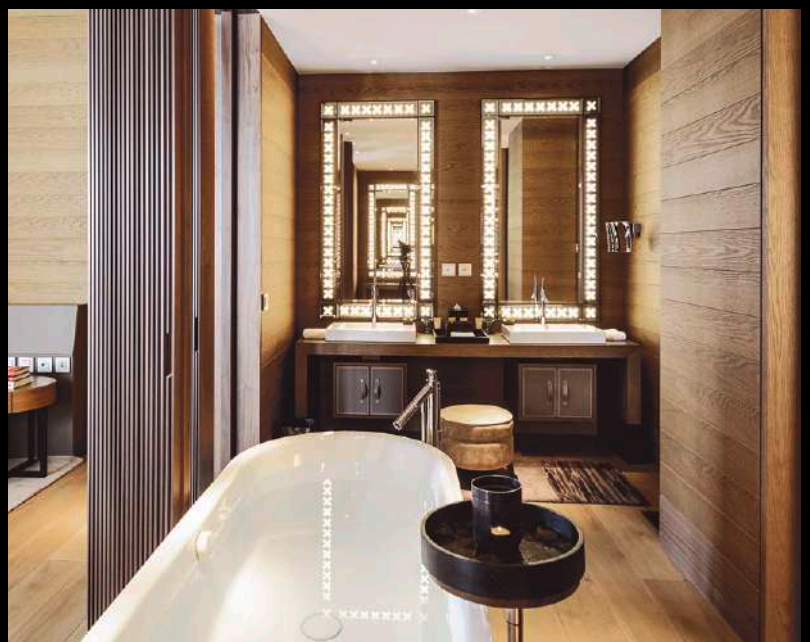
The application of labels, including symbols that identify spray modes

Be it the desire for modified handles or the need for a longer extension between wall and washbasin, AXOR Signature makes one-of-a-kind bathroom items a reality. Items that express the personality of the individual, right down to one's monogram or signet. Made by the AXOR experts.

Learn more about AXOR Signature:
axor-design.com/axor-signature



The lengthening of a ceiling fixture, adapted to the height of the room



The lengthening of a spout for a floor-standing bathtub faucet, adapted to the width of the bathtub rim



METAL –
BRUSHED BRONZE



AMERICAN WALNUT



NERO MARQUINA MARBLE



NAPA LEATHER

INDIVIDUALIZATION IN
A NEW DIMENSION.

Metal, wood, marble, leather. AXOR Signature makes new tactile experiences possible at the faucet. Exquisite natural materials such as richly grained walnut veneer or Napa leather create a particularly sensual fascination. As does deep black marble with distinctive white veining. Each plate is carefully selected and unmistakably original. For the ultimate in customization.

Exclusively for the AXOR MyEdition collection: axor-design.com/axor-myedition

INSPIRATION

AT HOME IN LUXURIOUS
BATHROOMS ALL
OVER THE WORLD.

74

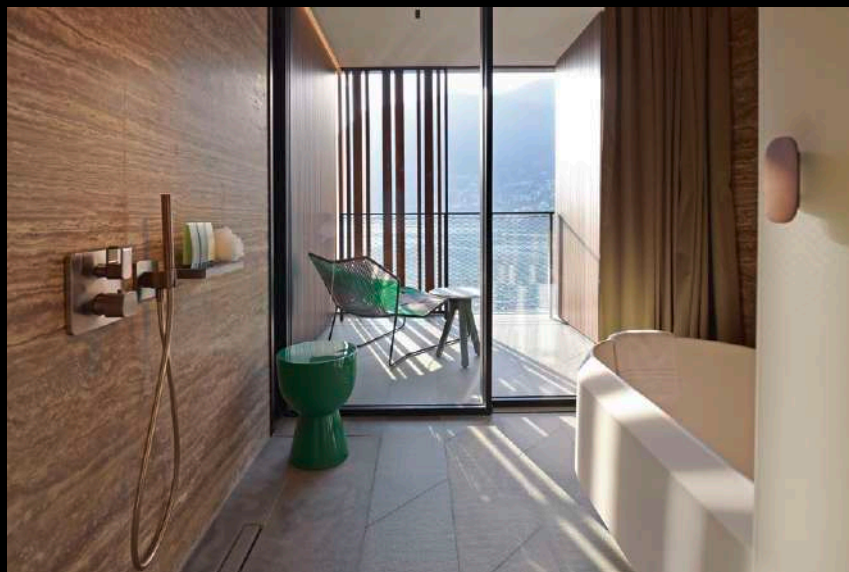
In demand worldwide, AXOR faucets and showers can be found in the most prestigious hotels and restaurants and most luxurious apartments, houses and villas. What unites these places is the exceedingly high standard they set for design, quality, customization and sustainability.





"THE COLOR-COORDINATED
FAUCETS MERGED WITH
THE OTHER MATERIALS TO
BECOME ONE UNIT."

Luis Contreras, Owner of Il Sereno



IL SERENO, LAKE COMO

A RENAISSANCE OF LIGHTNESS.

- / Interior design: Patricia Urquiola
- / Collection: AXOR Urquiola
- / Surface finishes: Brushed Nickel, Brushed Red Gold

Lago di Como, a favorite refuge of George Clooney and many other Hollywood stars, has enjoyed something of a renaissance in recent years. A magnificent collection of 15th-Century buildings lines this Northern Italian lake, but a brand new structure—the luxurious hotel Il Sereno—has caught the attention of the international jet set. A fresh interpretation of the Italian rationalism of the 1920s and 30s, Il Sereno features thirty suites, as intimate as they are exclusive, each with fascinating views of the lake.

77

The developers of this exquisite hotel have chosen AXOR as the perfect match for the rich materials and high-quality workmanship found in the bathrooms. From the hand-crafted brown-silver limestone on the walls to the walnut wood of the ceilings, all materials have been tastefully coordinated. And of course, AXOR Urquiola faucets for the washbasin and bathtub complete the luxurious look. All faucets have been customized with AXOR FinishPlus surface finishes in Brushed Nickel or Brushed Red Gold. Color coordinated, they merge together with all other materials to become a single unit. It is the embodiment of Italian glamour.

NOVE BY CITTERIO, MUNICH

AN OFFICE AT THE LEVEL OF A 5-STAR HOTEL

/ Architects: Antonio Citterio Patricia Viel and Partners

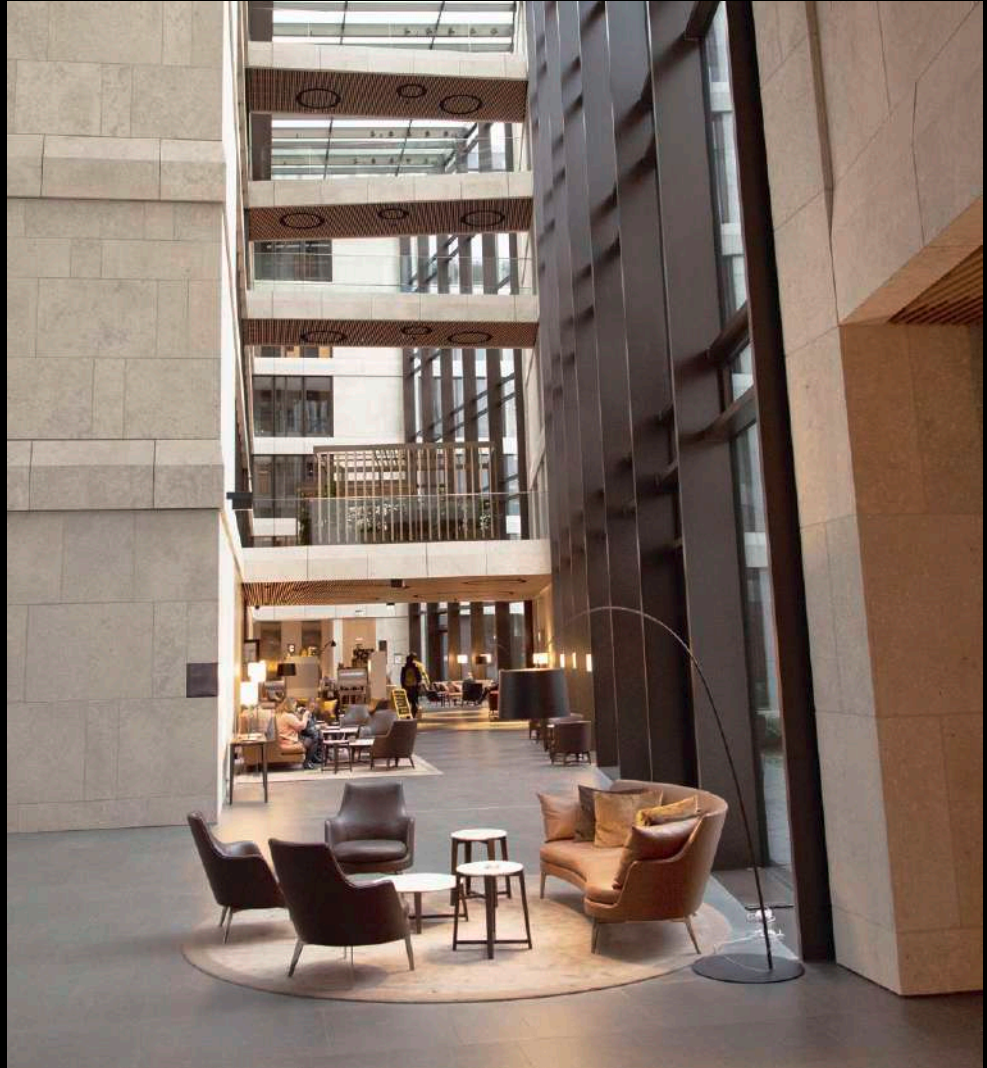
/ Collection: AXOR Citterio E

/ Surface finish: Brushed Black Chrome

Munich's exclusive work oasis for 1,300 people. Some 27,000 square meters of space in which to feel at ease. At its heart is a vast atrium covering more than 700 square meters. Indeed, the ground floor of NOVE by Citterio combines the flair of a luxury hotel lobby with the feel of a piazza. Just as he has done with his hotels for Bvlgari and the headquarters for Ermenegildo Zegna, Antonio Citterio demonstrates that he creates not only architecture but places in which to live, linger, thrive and flourish. Places of prestige, rich with natural stone, wood, glass and metal, where beauty and function are perfectly orchestrated.

The integrated bathrooms of these offices are equipped with AXOR products for the shower and washbasin, all in the exclusive Brushed Black Chrome surface finish. The bathroom experience is that of a luxury hotel. But the choice of AXOR also makes a statement about sustainability. The timelessly elegant design language of AXOR Citterio E is matched by its exceptional durability and efficient water consumption. With its LEED Platinum certification, NOVE by Citterio is a model of green building design.

AXOR FAUCETS AND SHOWERS,
HARMONIOUS IN DESIGN AND COLOR,
UNDERScore THE QUALITY OF THIS OFFICE
BUILDING AND INTEGRATE THEMSELVES
PERFECTLY INTO THE WHOLISTIC
CONCEPT OF ANTONIO CITTERIO.



79



© Alex Dywer Photo

THE TOWER YOKOHAMA
KITANAKA COMBINES AN
EXCEPTIONAL LOCATION
WITH TOP-QUALITY DESIGN
AND A GLOBAL OUTLOOK.
AXOR PRODUCTS FIT PERFECTLY
WITH THIS VISION.



© Tomoyasu Osakabe



THE TOWER YOKOHAMA KITANAKA, JAPAN

A LUXURIOUS LANDMARK WITH AXOR IN BATHROOMS.

- / Project Participants: Mitsui Fudosan Residential Co., Ltd., Marubeni Corporation
- / Architect: KAJIMA DESIGN, Panasonic Construction Engineering Co., Ltd.
- / Interior Designer: NAKO HORII DESIGN Concepts
- / Collections: AXOR Massaud, AXOR Citterio E
- / Surface finishes: Chrome, Polished Black Chrome

Yokohama has a striking new landmark. Nearly completed, The Tower Yokohama Kitanaka is a significant addition to the skyline of one of Japan's largest cities. Rising almost 200 meters above street level, the 58-story super high-rise mixed-use tower is the city's tallest and largest-scale condominium residence ever. The project enhances urban development by catering to international needs. Amidst such cosmopolitan flair, it's no surprise to find AXOR in the bathrooms.

The Tower Yokohama Kitanaka employs a harmonious mix of AXOR products, including pieces from the AXOR Massaud and AXOR Citterio E collections. The former features a waterfall-like spray that induces calm and contemplation. The latter, with its perfectly tapered spout, conveys a timeless elegance. For those fortunate enough to have secured a place in the sold-out tower, a stunning new home awaits — with AXOR in the bathroom.

BVLGARI RESORT, DUBAI

COSMOPOLITAN LUXURY MEETS MEDITERRANEAN STYLE.

/ Architects: Antonio Citterio Patricia Viel and Partners

/ Collection: AXOR Citterio

/ Surface finish: Chrome

A Mediterranean-inspired urban oasis, the Bvlgari Resort Dubai sprawls across 160,000 square meters of Jumeira Bay, the ultra-exclusive seahorse-shaped island adjoining Dubai's mainland by bridge. Renowned architecture firm Antonio Citterio Patricia Viel has overseen every detail of the resort's design, including 173 sea-facing apartments, 15 private mansions, 101 rooms and suites, 20 hotel villas, a 1,700 square-meter spa, and a 50-berth marina with yacht club. For all bathrooms, the architects chose AXOR Citterio.

The neoclassical design of the AXOR Citterio collection is the perfect match for Bvlgari's cosmopolitan luxury. At the wash basin and bath, three-hole mixers with iconic cross handles convey timeless elegance and urbanity. Cross handles in the shower complete the theme. Finished in Chrome, AXOR Citterio offers a sophisticated contrast to the surrounding Trevi travertine stone imported from Tivoli. With its characteristically smooth and flat planes, the collection brilliantly reflects Dubai's exquisite light.





A MEDITERRANEAN-INSPIRED
OASIS ON THE ARABIAN GULF,
THE BVLGARI RESORT DUBAI
IS THE PERFECT EXPRESSION
OF RELAXED ELEGANCE AND
COSMOPOLITAN LUXURY.



83



© Bvlgari Resort and Spa

Philippe Starck



Antonio Citterio



Jean-Marie Massaud



Patricia Urquiola



Nendo



Barber & Osgerby



PHOENIX until 2018



PHOENIX from 2019



Front



PHILIPPE STARCK // Perhaps the best-known of contemporary designers, he has a vision for a better world. A free spirit, he is renowned not only for the depth of his talent but for his breadth. From speakers to chandeliers, motorcycles to mega-yachts, he seems to have done it all. His everyday objects are, in their way, no less spectacular than his fabulous interiors. The hotels he has designed have attained a cult-like status.

ANTONIO CITTERIO // Few have had a greater influence on contemporary Italian design than he. His personal artistic touches reflect his fascination with timeless shapes and the highest-quality materials. From silverware to lighting, chairs to company headquarters, his understated style is always in the service of both functionality and beauty.

JEAN-MARIE MASSAUD // His organic designs are world-famous, from a volcano-inspired soccer stadium in Mexico to a "Manned Cloud" airship concept for France's ONERA aerospace lab to award-winning objects for everyday life. His work continually seeks to renew its subject through a thoughtful reconsideration of the stakes and an instinctive quest for elegance and lightness.

PATRICIA URQUIOLA // Her personal, experimental touches are unmistakable. She skillfully cultivates the eclectic with her creative combinations of styles, patterns and materials. Her studio in Milan brings a fresh interpretation to modern design, with feminine accents and surprising elements.

85

NENDO // Though his creations together with Oki Sato may break away from familiar perspectives, they are always intuitively clear. Translated, the name of his office is "modeling clay". Just as the name would imply, he generates his designs in a playful manner. His approach has placed him at the top of the international design scene.

BARBER & OSGERBY // This award-winning British design duo embodies the philosophy of interaction design. Their focus on how users interact with a work has resulted in large-scale public commissions, including the 2012 Olympic torch and the design of the two-pound coin for Great Britain's Royal Mint. Both works are characterized by significant haptic detail.

PHOENIX // A leading international firm for product and interaction design. Driven by the desire to create smart, sensible, substantial brand experiences that touch people. Internationally honored with over 700 design awards. For office chairs, service robots, smartphones and of course, bathroom design, a field in which they are known as pioneers.

FRONT // Anna Lindgren and Sofia Lagerkvist play with visual effects. Inspired by fashion, film and science, they impart a kind of magic to each of their objects. Their work is often an expression of their ironic way of looking at things and typically conveys the pleasure of surprise.

Australia – Hansgrohe Pty Ltd. / Level 1 / 123 Camberwell Rd / East Hawthorn / Victoria 3123
Tel. +61 3 9811 9971 / info@hansgrohe.com.au / hansgrohe.com.au

Belgium – Hansgrohe N.V.-S.A. / Riverside Business Park / Blvd Internationalelaan 55 K / B-1070 Anderlecht
Tel. +32 2 5430140 / Fax +32 2 5379486 / info@hansgrohe.be / axor-design.be

Croatia – Hansgrohe d.o.o. / Horvatova 82 / HR-10010 Zagreb
Tel. +385-1-56-30-800 / Fax +385-1-56-30-899 / info@hansgrohe.hr / hansgrohe.hr

Dubai – Hansgrohe SE DMCC Branch / Swiss Tower, Cluster Y / Jumeirah Lakes Towers, Office 1904 / PO Box 34216
Tel. +971 4 448 0200 / Fax +971 4 448 0299 / customerservice.mea@hansgrohe.com / hansgrohe-middleeast.com

Estonia – Hansgrohe Eesti / Mäealuse 2/1 / 12618 Tallinn
Tel. +372 6826829 / info@hansgrohe.ee / hansgrohe.ee

Finland – Hansgrohe SE / Hansgrohe Suomi / Arabiankatu 12 / FIN-00560 Helsinki
Tel. +358 (0) 207 931340 / info@hansgrohe.fi / hansgrohe.fi

Hungary – Hansgrohe Kft. / Forgách utca 11-13 / 1139 Budapest
Tel. +36 1 2369090 / info@hansgrohe.hu / hansgrohe.hu

India – Hansgrohe India (Pvt.) Ltd. / Office No. 701 / Lunkad Sky Station / Viman Nagar / Pune – 411014 Maharashtra / India
Phone No. +912066259500 / info@hansgrohe.in / hansgrohe.in

Japan – Hansgrohe Japan K.K. / Tennozu First Tower 2F / 2-2-4 Higashi Shinagawa / Shinagawa-ku / Tokyo 140-0002
Tel. +81 3 5715-3073 / Fax +81 3 5715-3088 / info@hansgrohe.co.jp / hansgrohe.co.jp

Latvia – Hansgrohe Latvijas pārstāvniecība / SIA Aqua Studio / Raiņa iela 14 / 3913 Iecava
Tel. +371 9229029 / info@hansgrohe.lv / hansgrohe.lv

Lithuania – Hansgrohe atstovybė / Santoza / Ulonų g. 5 / 08240 Vilnius
Tel. +370 5 2043291 / info@hansgrohe.lt / hansgrohe.lt

Portugal – Hansgrohe / Riera Can Pahissa, 26 / 08750 Molins de Rei
Tel. +34 93 6803900 / Fax +34 93 6803909 / info@hansgrohe.pt / hansgrohe.pt

Singapore – Hansgrohe Pte. Ltd. / 69 Mohamed Sultan Road / Singapore 239015
Tel. +65 6884 5060 / Fax +65 6884 5071 / info@hansgrohe.com.sg / hansgrohe.com.sg

South Africa – Hansgrohe South Africa (pty) Ltd. / 30 Archimedes Street / Kramerville / Johannesburg 2090
Tel. +27 11 445 0000 / Fax +27 11 445 0199 / sales@hansgrohe.co.za / hansgrohe.co.za

Sweden – Hansgrohe AB / Telefon +46 (0) 31-21 66 00 / Fax +46 (0) 31-19 01 03 / info@hansgrohe.se / hansgrohe.se

United Kingdom – Hansgrohe Limited / Units D1 and D2 / Sandown Park Trading Estate / Royal Mills / KT10 8BL Esher Surrey
Tel. +44 (0) 1372 472 001 / Fax +44 (0) 1372 470 670 / customerservice@hansgrohe.co.uk / pro.hansgrohe.co.uk

Imprint

Publisher:

AXOR / Hansgrohe SE

Concept and design:

bilekjaeger, Stuttgart

Photography:

Markus Wendler

Uli Maier

Jehle & Will

Nicolas Guerin

Kuhnle & Knödler

Lena Modigh

Pierre Monetta

René Müller

Wolfgang Scheppe

Alexander Schneider

Ruy Teixeira

Photography AXOR inspiration:

Il Sereno, Comer See – JP Piter

Nove, München – Alex Dywer Photo

THE TOWER YOKOHAMA KITANAKA – Tomoyasu Osakabe

Bulgari Resort, Dubai – Bulgari Resort and Spa

Lithography:

Eder GmbH, Ostfildern

Typesetting:

bilekjaeger, Stuttgart

Stolz-Krechting, Lahr

Print:

B&K Offsetdruck, Ottersweier

Date:

July 2019

AXOR



AXOR / Hansgrohe SE
Austraße 5-9
77761 Schiltach
Germany

info@axor-design.com
axor-design.com



en-AXOR Essentials / Subject to technical alterations and colour differences due to the printing process.
Form-Nr. 84090450 / 04/19/42.753 / Printed in Germany / Printed on 100% chlorine free bleached paper.